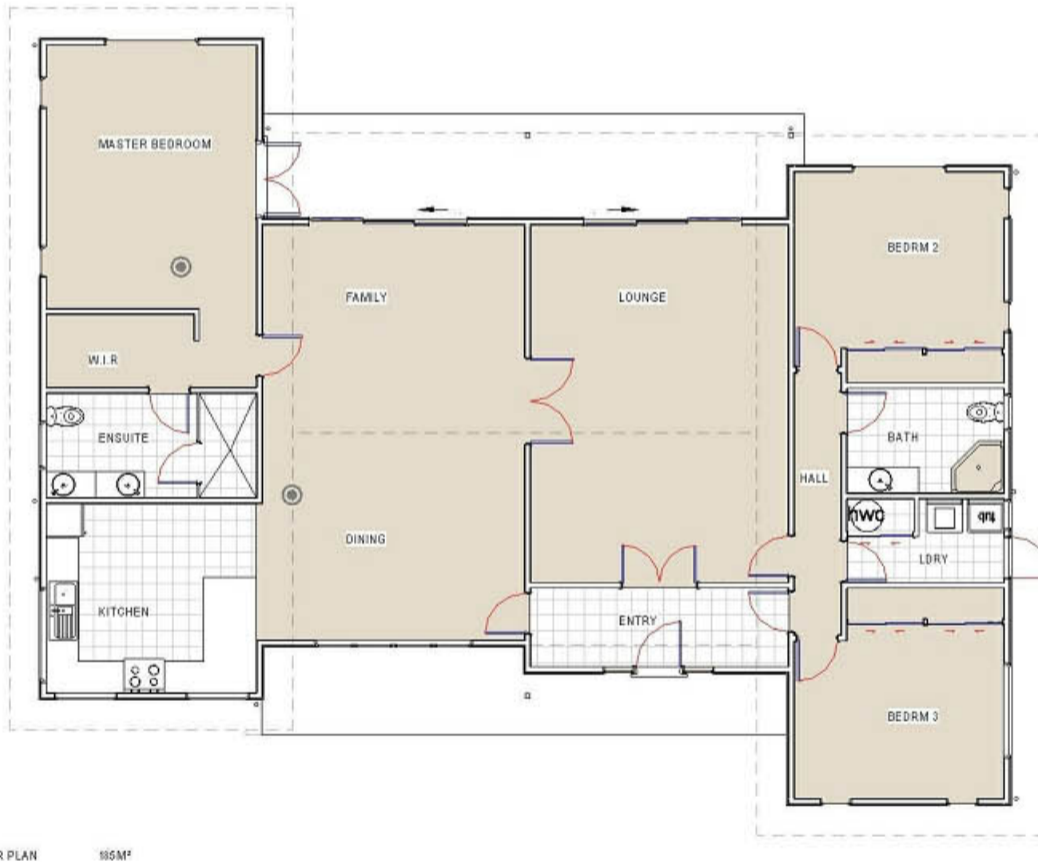


P R O J E C T

H O M E S L I M I T E D



FLOOR PLAN 185M²

A mono pitched roofed, generous size family home of 185m² including 3 bedrooms relying on a separate garage. The building is shown in a combination of weatherboard and feature walls of concrete block giving a contemporary feel. The open plan living area is featured at the heart of the home with separate wings for the master bedroom and bedroom 2 and 3.

Floor area: 185m²
Claddings: Weatherboard and Concrete Block
Roofing: Corrugated Iron
Joinery: Double Glazed Residential

OHAU BAY



www.projecthomes.co.nz

Phone 0800 773797